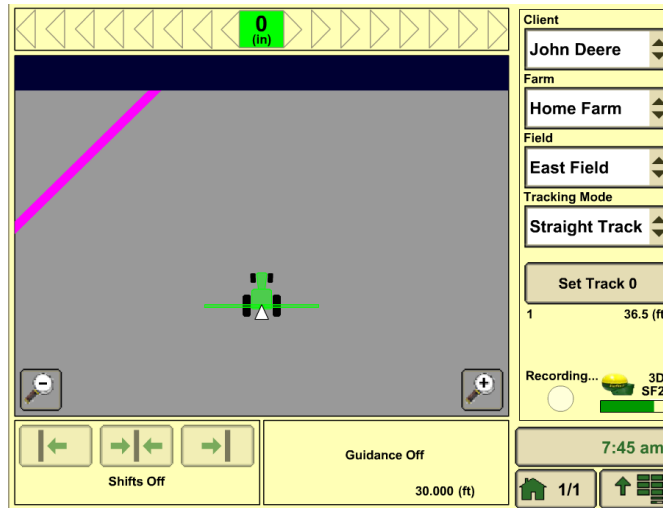
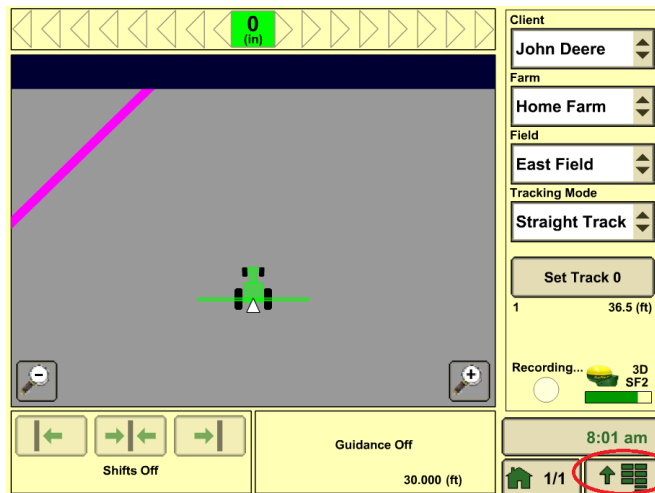


# How to Change Product Application Recording

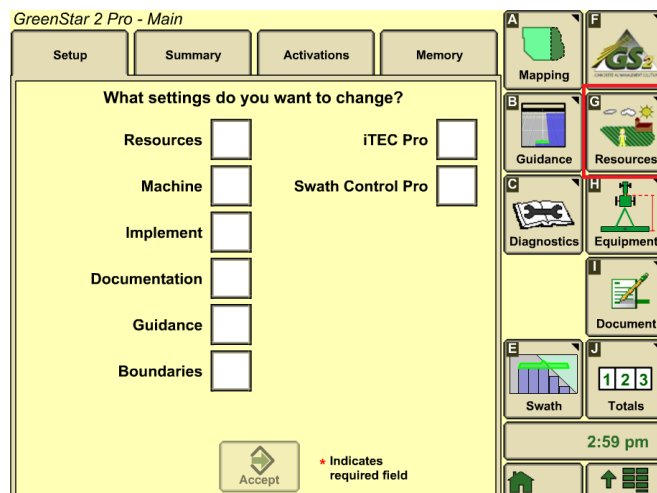
## 1. Home Page.



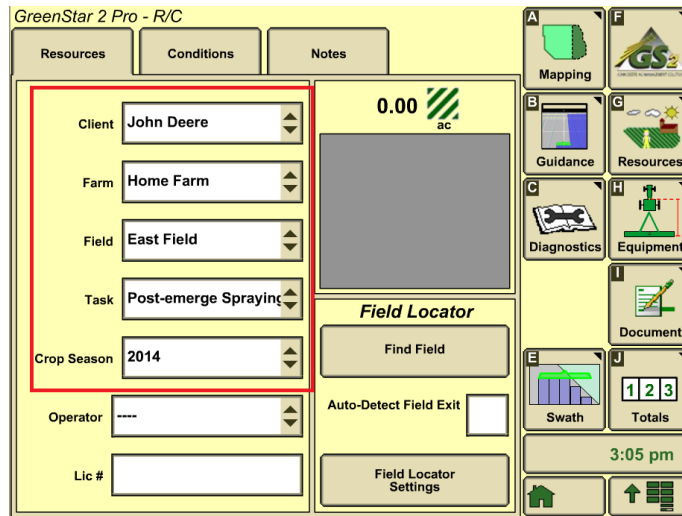
## 2. Press “Main Menu” Button.



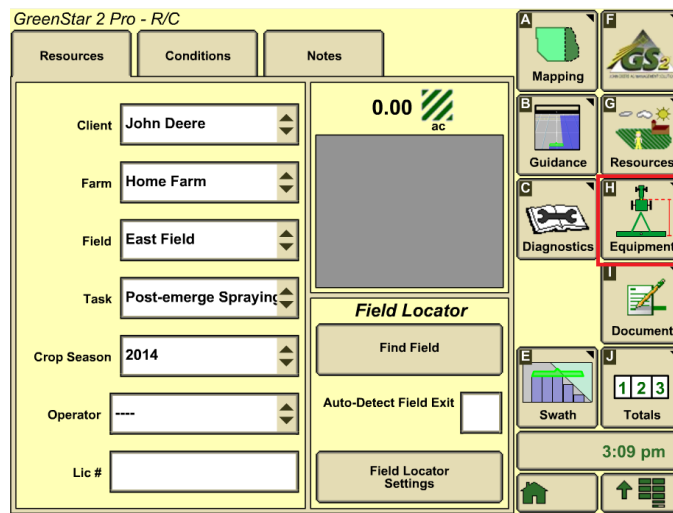
## 3. Press the “Resources” Button.



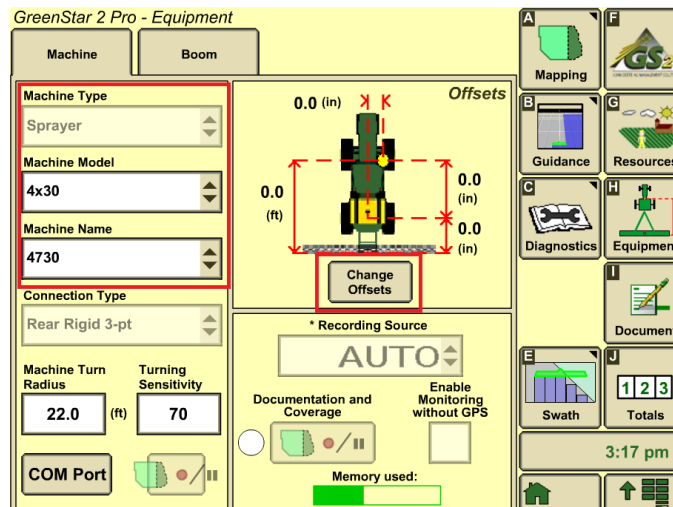
4. Make sure "Client, Farm, Field, Task and Crop Season" boxes are filled out correctly.



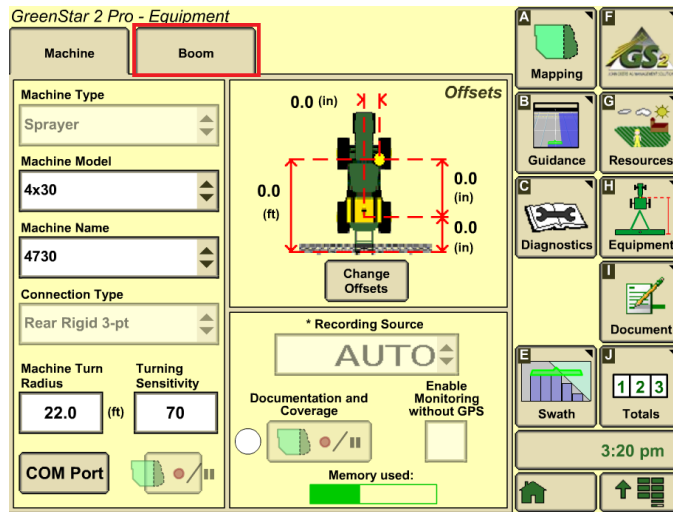
5. Press the "Equipment" button.



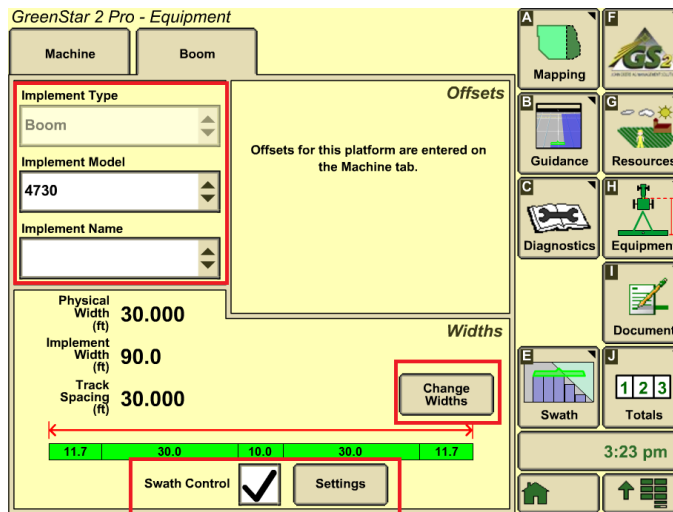
6. Make sure "Machine Type, Machine Model, Machine Name, and Connection Type" are filled out correctly. Some of these boxes might be grayed. To change the machine offsets, press "Change Offsets."



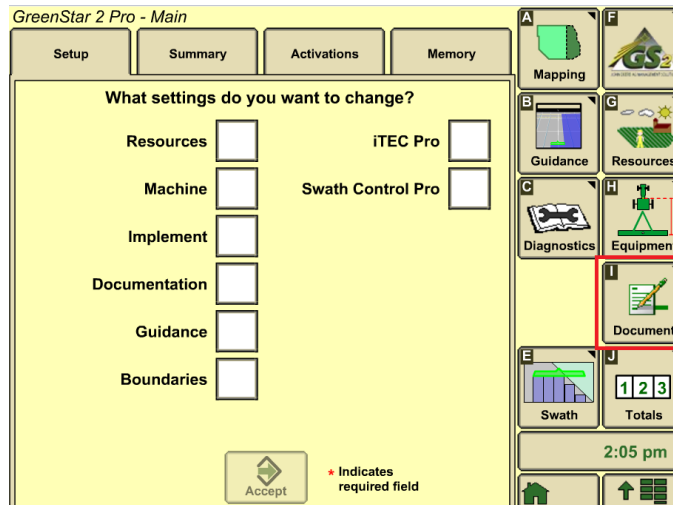
## 7. Select the Boom tab.



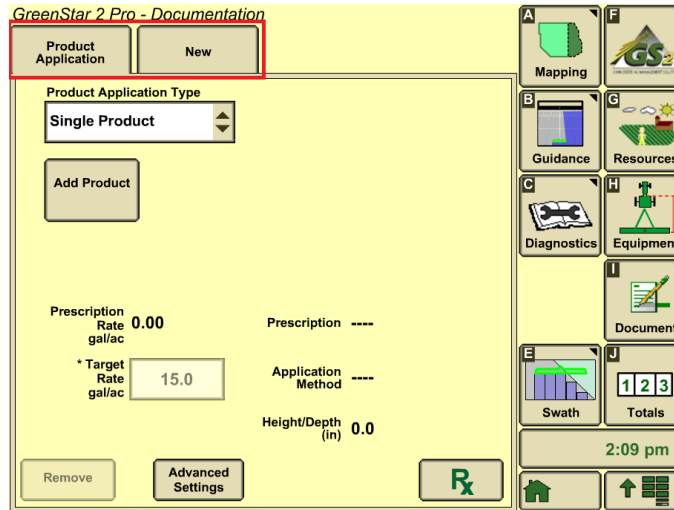
8. Make sure that "Implement Type, Implement Model and Implement Name" boxes are filled out correctly. Some of these boxes might be grayed out. Also verify that widths and track spacing are correct. If you need to change widths or spacing, press "Change Widths" box.



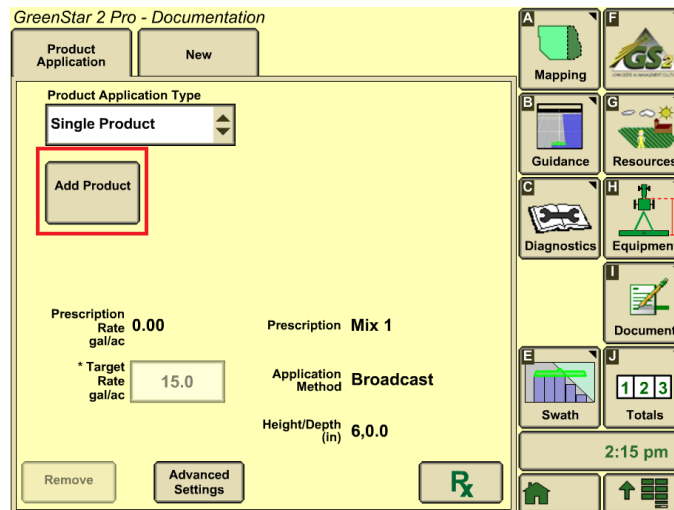
## 9. Press "Document" Button.



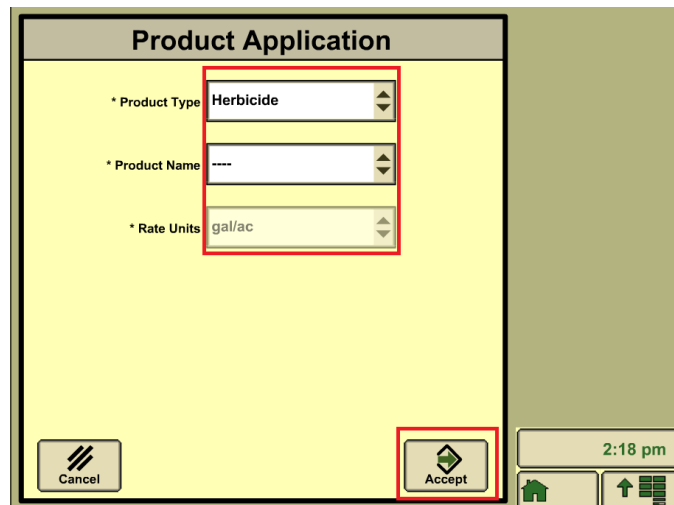
10. ***\*There must be only 1 tab on top next to "New". If you have additional tabs it will not record and you need to remove them by pressing the "Remove Button" on bottom left.\****



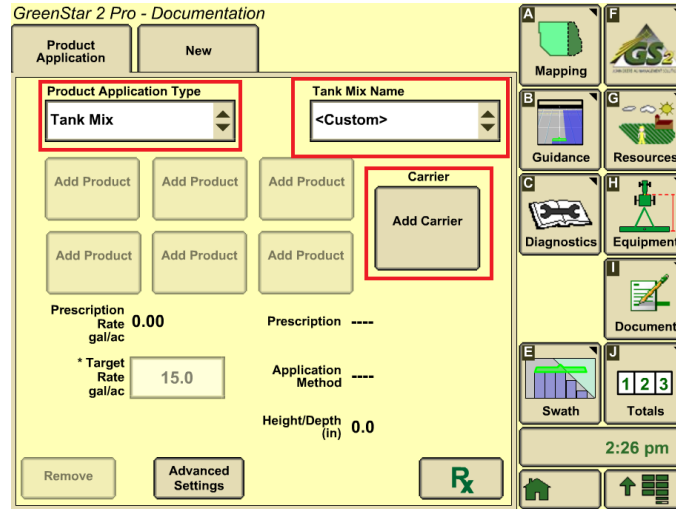
11. Press "Add Product" to select a Product.



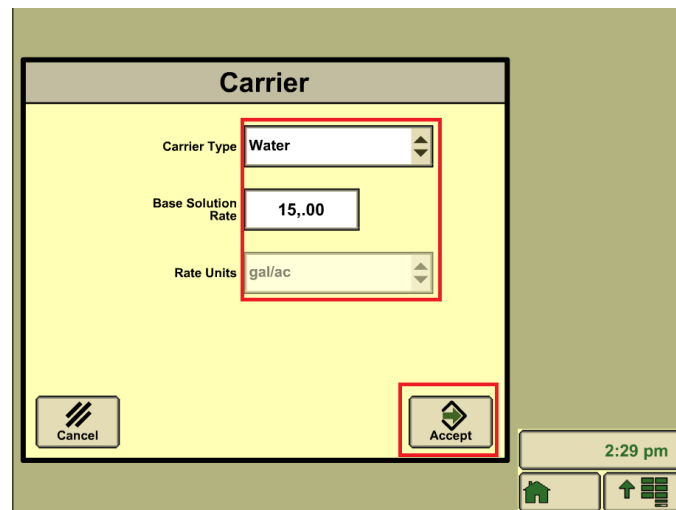
12. Press the Drop Down Arrows to select the correct Product Type, Product Name, and Rate Units. Once all the Drop Downs are the correct information, press the accept button.



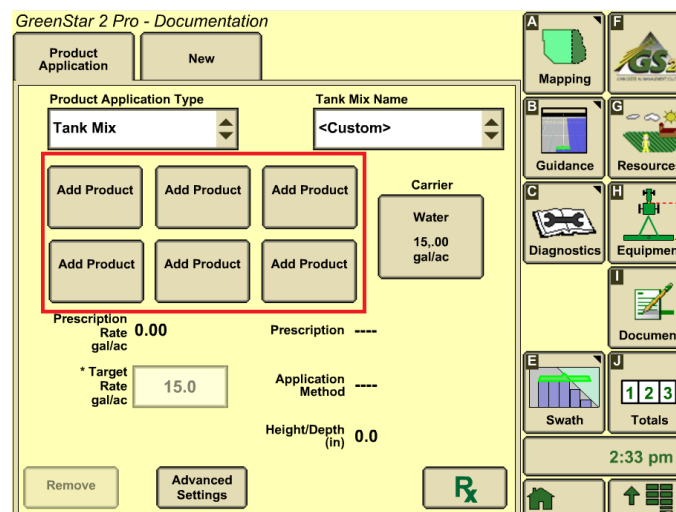
13. If you are doing a Tank Mix, you need to switch the Product Application Type to Tank Mix. Then you will have to make a new Tank Mix or use an existing mix. To make a new Tank Mix, a person would have to press the Add Carrier button.



14. Press the Drop Down arrows to select the Carrier Type, Base Solution Rate, and the Rate Units. After you get all of the information in that is needed, press the accept arrow.



15. To add a product, select one of the add product buttons.



16. Press the Drop Downs to add the correct information for Product Type, Product Name, Rate Units, and Rate. You that is done, press the accept button.

**Product Application**

\* Product Type: Herbicide

\* Product Name: RoundUp

\* Rate Units: gal/ac

\* Rate: 0,40

Cancel Accept

2:36 pm

17. If you have to add more products to the Tank Mix, repeat steps 10-11.

**GreenStar 2 Pro - Documentation**

Product Application New

Product Application Type: Tank Mix Tank Mix Name: <Custom>

RoundUp 0,40 gal/ac Add Product Add Product

Add Product Add Product Add Product

Carrier: Water 15,00 gal/ac

Prescription Rate 0.00 gal/ac Prescription ----

\* Target Rate 15.0 gal/ac Application Method ----

Height/Depth (in) 0.0

Remove Advanced Settings Rx

Mapping Guidance Diagnostics Swath Totals

2:40 pm

18. Press the “Home” button and Apply Product.

**GreenStar 2 Pro - Documentation**

Product Application New

Product Application Type: Tank Mix Tank Mix Name: <Custom>

RoundUp 0,40 gal/ac Add Product Add Product

Add Product Add Product Add Product

Carrier: Water 15,00 gal/ac

Prescription Rate 0.00 gal/ac Prescription ----

\* Target Rate 15.0 gal/ac Application Method ----

Height/Depth (in) 0.0

Remove Advanced Settings Rx

Mapping Guidance Diagnostics Swath Totals

Home

3:33 pm