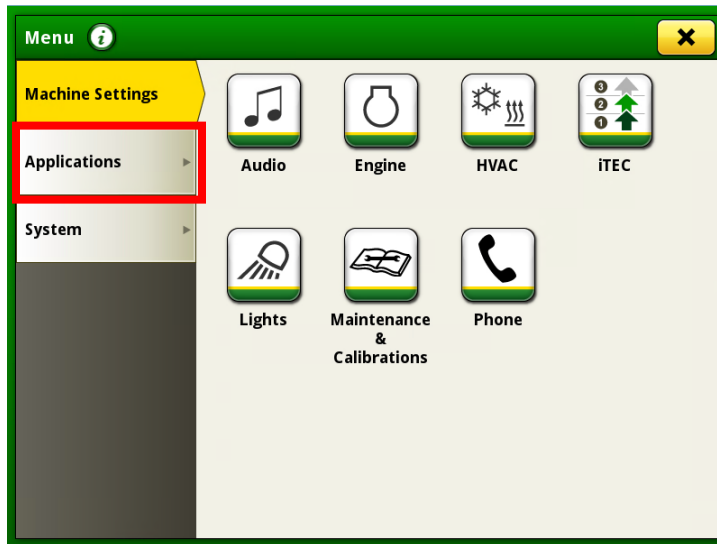


Generation 4 Command Center Setting Up Home Pages

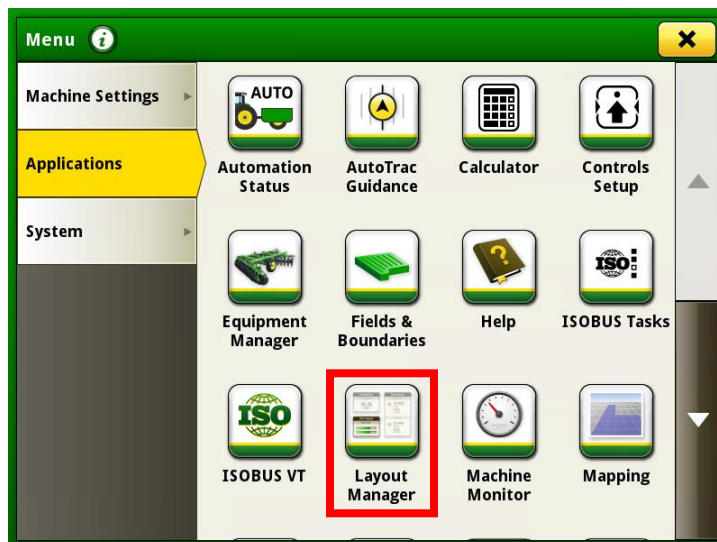
1. Press the “Menu” Button.



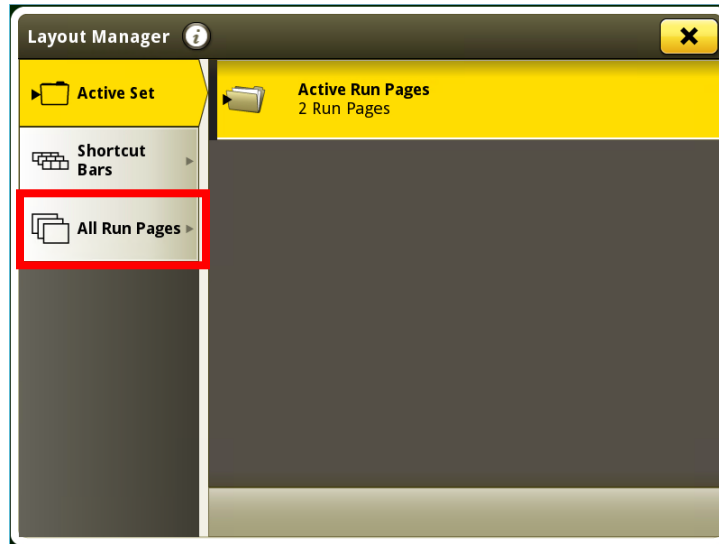
2. Press the “Applications” Button.



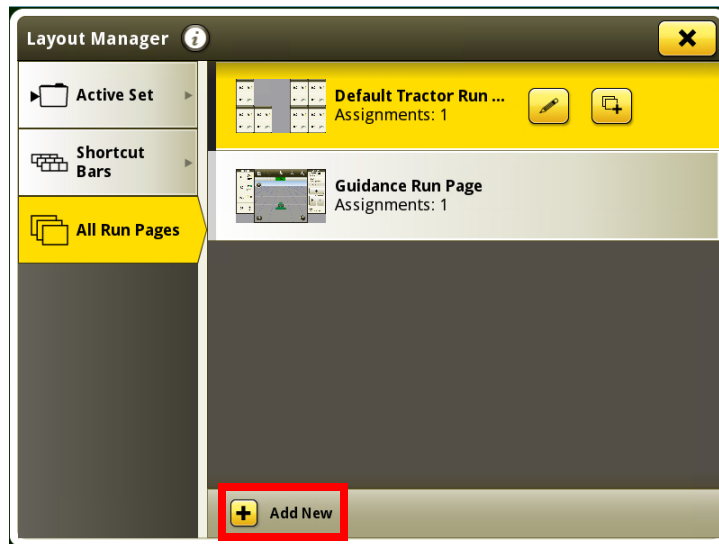
3. Press the “Layout Manager” Button.



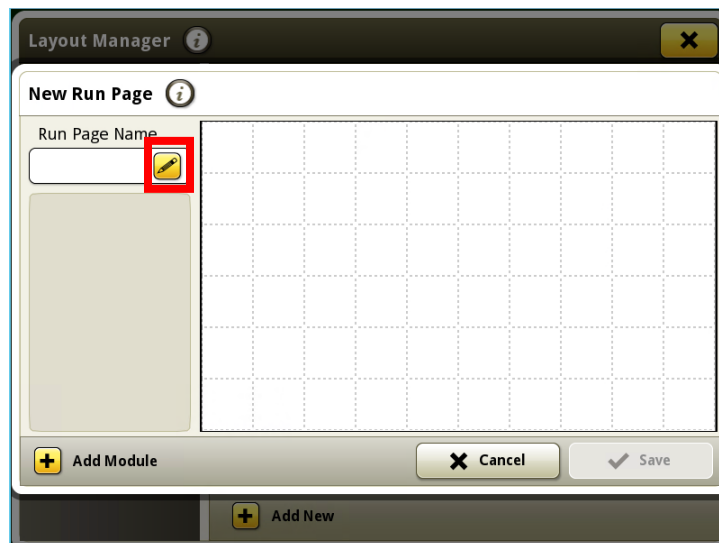
4. Press the "All Run Pages" Button.



5. Press the "Add New" Button.



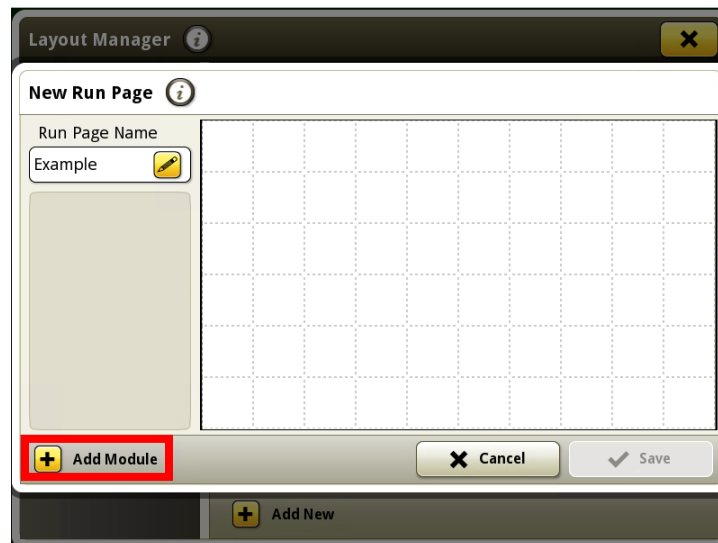
6. Press the "Pencil" Button.



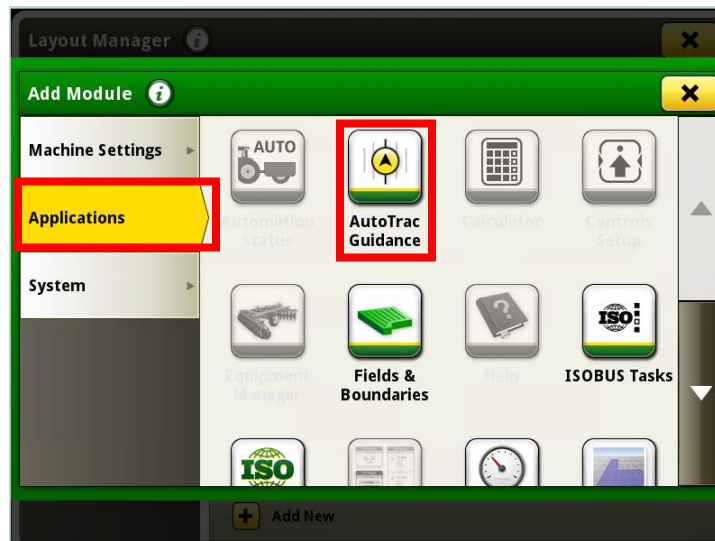
7. Name "Run Page" as desired then press "OK" Button.



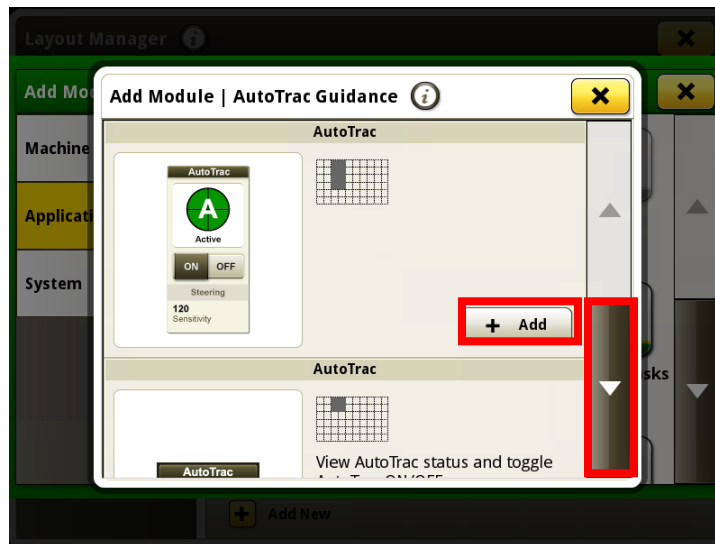
8. Press the "Add Module" Button.



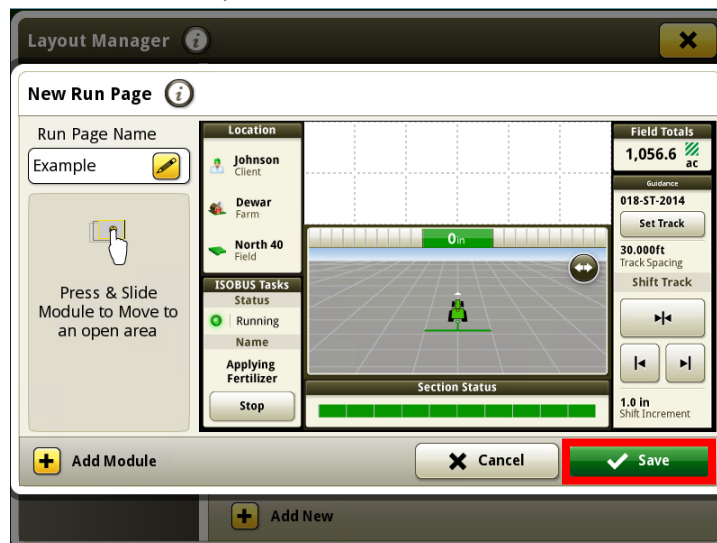
9. Two options to choose from are the "Machine Settings" and "Applications" Tab. ***Note: Can only use options that are not grayed out.***



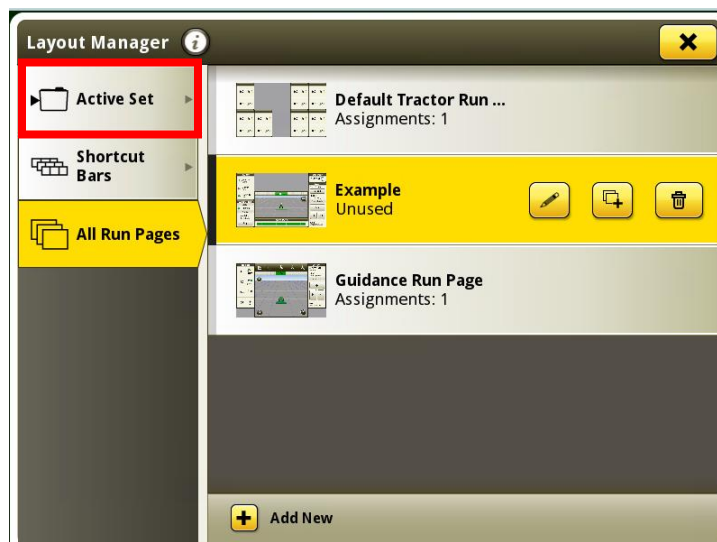
10. After selecting an option, scroll through the different choices that each module contains. After finding the option you like press the “Add” Button.



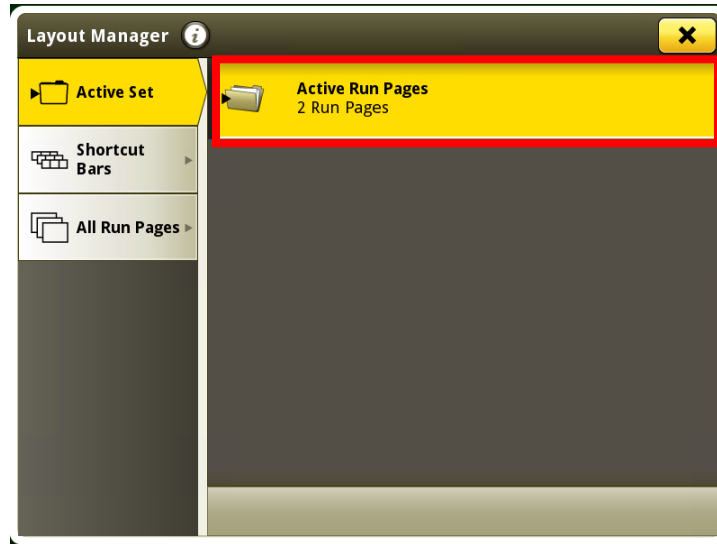
11. To add more options to Run Page, repeat steps 8-10 until your run page is filled out to your desired preferences. Then press the “Save” Button.



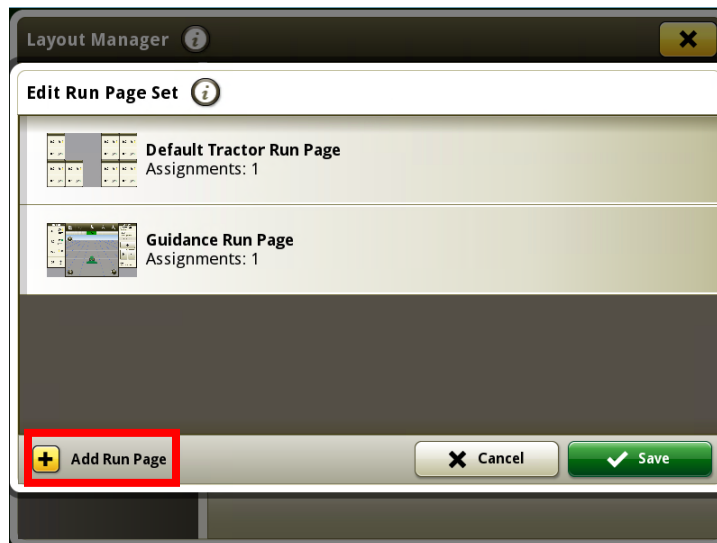
12. After creating run page, press the “Active Set” Button.



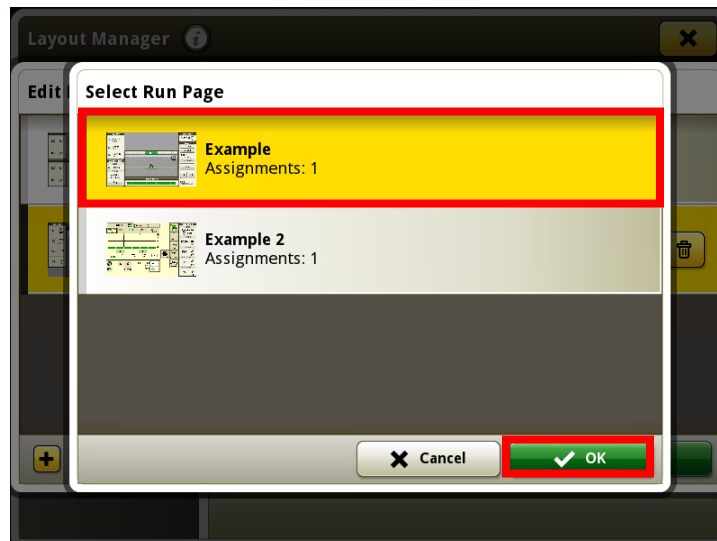
13. Press the “Active Run Pages” Button.



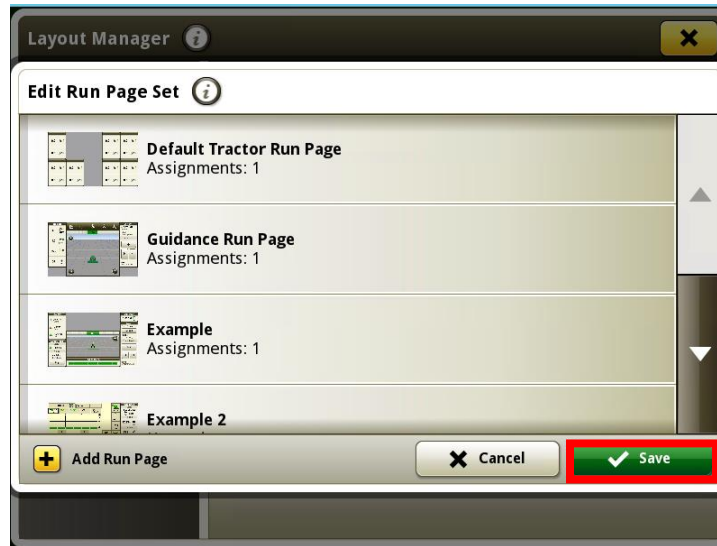
14. Press the “Add Run Page” Button.



15. Select desired Run Page and press “OK” Button.



16. Repeat Steps 14-15 until all desired run pages are added. Then press the "Save" Button.



17. Once back at the home page use the arrows in the upper right corner to scroll through the different home pages.

